

EMERGENCY ROOM OR URGENT CARE

The care you need, when you need it.

When a sudden illness or injury strikes and your regular doctor isn't available, we're here with the care you need.

Urgent Care

If you just don't feel well and are suffering from:

- Colds/Flu/Fever/Cough
- Sore throat
- Ear aches
- Sprains/Strains/
Simple fractures
- Scrapes/Cuts
- Minor burns
- Rashes without fever, like
poison ivy/insect bites
- Nausea
- Urinary tract infections
- Back pain

Use main entrance
and check in at main
registration.

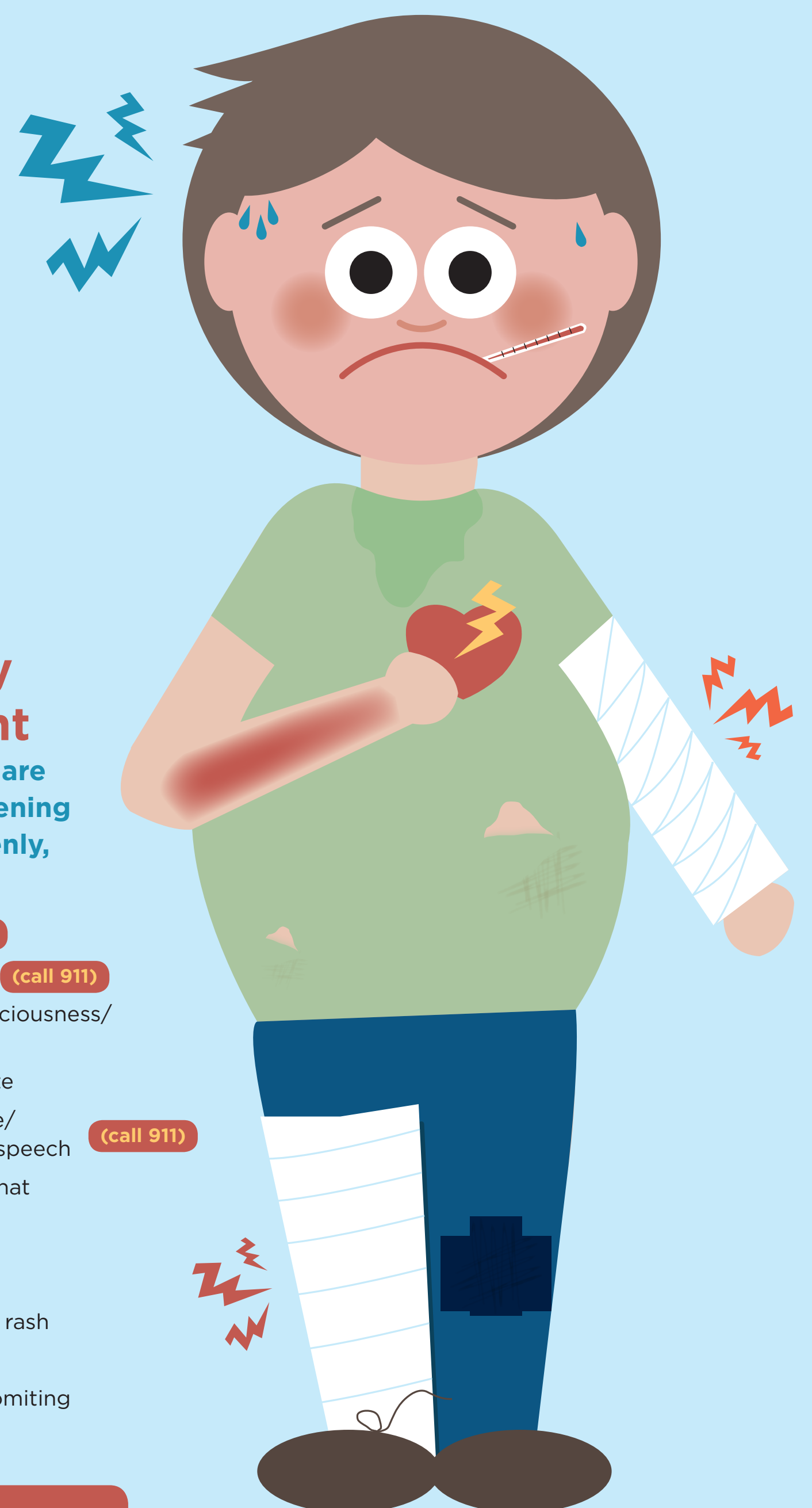


Emergency Department

If your symptoms are severe, life threatening or come on suddenly, such as:

- Chest pain (call 911)
- Shortness of breath (call 911)
- Fainting/Loss of consciousness/
Change in vision
- Change in mental state
- Weakness on one side/
facial droop, garbled speech (call 911)
- Deep cuts/Bleeding that
won't stop
- Sudden, severe pain
anywhere in the body
- High fever/Fever with rash
- Seizures
- Severe or repeated vomiting
- Serious burns

Use Emergency
Department entrance.



HSHS
Sacred Heart
Hospital